

# Replacing Moderately or Fully Damaged Knobs for Magnalatch V2

This documentation will cover full replacement of Magnalatch V2 knob pull. The instructions will cover both Options (A) and (B) pictured below:

- [Option A](#): V2 Magnalatch with an undamaged, unmodified shaft.
- [Option B](#): V2 Magnalatch with a damaged shaft, or a shaft that has been trimmed to support my **Gen1** replacement knobs.

## Tools Required:

- 12" of dental floss or thin string. Waxed dental floss works great because it will maintain a knot and rigidity through the knob
- Large flat-head screwdriver
- Medium-sized phillips screwdriver (for Option B only)
- Drill & 1/16" drill bit

## Benefits of Gen2 Model:

- No drilling required if your shaft is intact!
- Lock function continues to work (line arrow up with the front of the lock to lock)
- No drilling on the side of the shaft!
- Visually similar to original V2 knob
- Easier to replace with another Gen2



- If your current Magnalatch does not have easy access to the inner shaft (in situations where you have partial damage and have some of the pull left), please see the section below on [Prepping your V2 Magnalatch](#) before you proceed to Option A.
- If your Magnalatch has the shaft accessible, determine if it is damaged using the above picture or [examples](#) below and proceed to [Option A](#) or [Option B](#).
- When in doubt, use the [Examples](#) to determine where to go next.

NOTE: If you are migrating from a previous version of my replacement knobs, please review [Migrating from a Gen1 to a Gen2 Knob section](#).

## Examples



Remove clip, follow [Option A](#)



Follow [Option B](#)



Most likely the shaft is damaged, so [Option B](#)



May not work at all due to the shaft being damaged severely. [Option B](#) may work but no promises.



You may be able to use one of my Minor knobs which would cover the existing damage, or you could follow the [Prep step](#), then proceed with [Option A](#).

## Prepping your V2 Magnalatch for a complete knob replacement

Your V2 knobs could exhibit various levels of damage, but in most cases, if the cap on top of your knob is missing or severely damaged, it will make the most sense to completely replace your knob with one of my **Gen2** replacement knobs. The **Gen2** knob requires minor prep work to install. If you are replacing or upgrading from one of my **Gen1** replacement knobs, your existing lock should look like **Option B** above, and not require further modification.

1. Pop the cap off of what is left of your V2 knob. Depending on the damage, you may not have a cap left at all. Use a small screwdriver or razor blade to pop it off.



- You should see the top of the shaft with a clip on it that holds the shaft inside the knob. Your knob does not have a hole in the top of the shaft if you have not used my replacement knobs in the past.
- Use a screwdriver to lift up the shaft and clip. The clip should slide off like the figure below. You may then remove what is left of your damaged pull and put it to the side. If the clip and shaft are fully intact (like **Option A** above), there is no need to further modify the shaft for your repair. If the shaft is **not** fully intact, and looks like **Option B**, you may stop here and proceed to the [Option B](#) instructions below.





## Option A - Repairing a V2 Magnalatch with an intact shaft or installed screw

- 1) Tie the dental floss on the end of the shaft and thread the floss through the pull, then pull the shaft up through the pull.

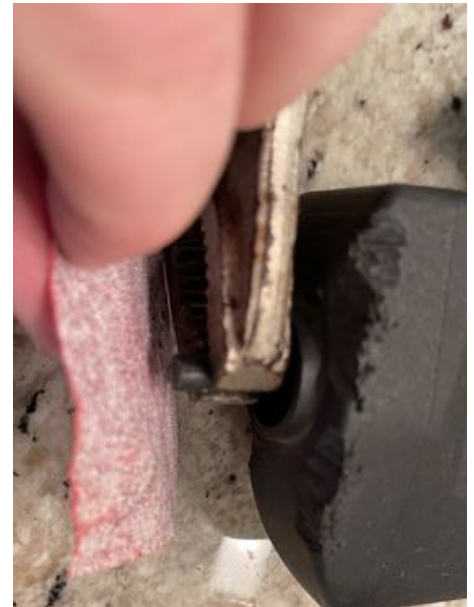


- 2) Untie and remove the floss while holding the shaft in place.
- 3) Slide the existing clip, or provided clip if the existing clip is damaged, over the shaft..
- 4) **GENTLY** screw the knob top on the replacement latch but **DO NOT OVERTIGHTEN.**



## Option B - Repairing a V2 Magnalatch with a damaged shaft

- 1) If your shaft is damaged to the point a clip will not work on it, you will need to pull the rod out, clip off what is left of the thin part of the shaft, and sand down the end until the rod is flat on top.



- 2) Use a 1/16" drill bit and drill a hole 1/2" into the rod - **be sure to drill straight into the shaft - perpendicular to the horizon (assuming the unit is mounted).**
- 3) Screw the included screw into the shaft about 1/4" until tight, but do not overtighten.
- 4) Please see the [Option A](#) instructions above, but instead of the plastic clip going around the inner, small shaft, the clip will go around the screw once pulled through the replacement knob.



## Migrating from a Gen1 to Gen2 knob

For **Gen1** users, you will need to remove what is left of your existing Gen1 knob by reversing the installation process. You may need to take the lock off of the mount to do this, or find a friend to assist.

1. Lift up the knob and turn the knob around until you see the hole through the opening on the side of the knob.
2. Insert a paper clip through the hole and into the small hole on the shaft.
3. Unscrew the knob using a small Phillips screwdriver.
4. Pull the knob back up and screw the screw into the shaft about  $\frac{1}{4}$ " until tight, but do not overtighten.
5. Follow the [Option A](#) instructions above but instead of the plastic clip going around the inner, small shaft, the clip will go around the screw once pulled through the replacement knob Gen2 knob.

